



Hope House Church Street, Loose, Loose, Kent, ME15 0BU  
Offers in excess of £700,000



\*\*\*TAKE THE VIRTUAL TOUR\*\*\*2807 SQ FT\*\*\*SUBSTANTIAL AND UNIQUE FIVE BEDROOM HOME IN THE HEART OF THE LOOSE VALLEY WITH A BEAUTIFUL GARDEN BACKING ONTO THE LOOSE STREAM.

Hope House sits proudly on Church Street, in the heart of the historic and sought after Loose Valley. The Loose Stream runs through the valley and you are served with picturesque walks through woodlands with babbling brooks, ponds and Crisbrook Meadow. Local amenities include the Chequers Inn pub, Ofsted rated 'Outstanding' Loose Primary School, as well as Post Office and Sainsburys Local. For the commuter, Staplehurst or Marden Stations are only 10 minute drive away, with excellent services to London Bridge, Waterloo and Charing Cross.

This most intriguing of properties is steeped in history and offers a unique opportunity for renovations. Inside, there are five good sized bedrooms and a family bathroom on the first floor. On the ground floor, the large entrance hall feeds into a sitting room, sizeable kitchen/breakfast room and family room to the front. At the rear there is a useful cloakroom and a beautiful drawing room with feature fireplace and french doors leading onto a fabulous balcony overlooking the stunning rear gardens. The lower ground floor has been used as an annex by the current vendors housing a shower room, kitchen and a reception room with conservatory.

Outside, the space to the side of the property can offer off road parking and leads to the stunning rear garden which backs onto the Loose Stream. A real feature of the home, the garden runs adjacent to a beautiful Church and measures approximately 80ft by 60ft and is predominately laid to lawn with a variety of shrubs and trees. There are further sheds, a summer house and a workshop providing plenty of additional space for storage.

If you are on the market for a rarely available home in a most sought after location, then call Page and Wells Loose Office today and book your viewing!





## To The Ground Floor

Entrance Hall 13'7 x 7 (4.14m x 2.13m)

Sitting Room 15 x 13'7 (4.57m x 4.14m)

Kitchen/Breakfast Room 13'7 x 12 (4.14m x 3.66m)

Family Room 18'6 x 6'9 (5.64m x 2.06m)

Drawing Room 22'6 x 13'11 (6.86m x 4.24m)

Balcony 12'4 x 8'8 (3.76m x 2.64m)

Gym 11'11 x 7'1 (3.63m x 2.16m)

Cloakroom

## To The First Floor

Bedroom 1 13'7 x 11'8 (4.14m x 3.56m)

Bedroom 2 13'11 x 10'11 (4.24m x 3.33m)

Bedroom 3 11'10 x 10'3 (3.61m x 3.12m)

Bedroom 4 11'1 x 8'8 (3.38m x 2.64m)

Bedroom 5 13'7 x 7'10 (4.14m x 2.39m)

Family Bathroom

## Lower Ground Floor

Reception Room 21'11 x 12'1 (6.68m x 3.68m)

Kitchen 7 x 6'9 (2.13m x 2.06m)

Conservatory 10'8 x 7'10 (3.25m x 2.39m)

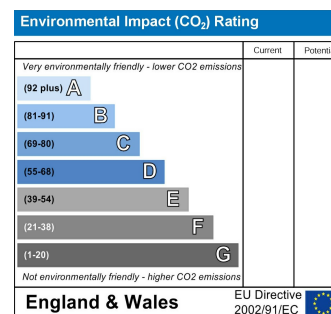
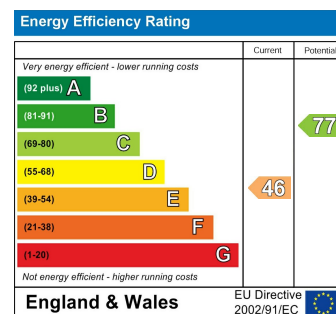
Externally

Space To Side For A Driveway

Stunning Rear Garden Backing Onto The Loose Stream

Workshop Ground Floor 13'5 x 9'8 (4.09m x 2.95m)

Workshop First Floor 13'5 x 9'8 (4.09m x 2.95m)



Page & Wells limited for themselves and for the vendors of this property whose agents they are give notice that: 1. These particulars do not constitute any part of, an offer or a contract. 2. All statements contained in these particulars as to this property are made without responsibility on the part of Page & Wells Limited or the Vendor. 3. None of the statements contained in these particulars as to the property is to be relied on as statements or representations of fact. 4. Any intending purchaser must satisfy himself by inspection or otherwise as to the correctness of each of the statements contained in these particulars. 5. The vendor does not make or give, and neither Page & Wells Limited nor any person in their employment has any authority to make or give any representation whatsoever in relation to this property. These particulars are supplied on the understanding that all negotiations are carried out throughout Page & Wells Limited. Properties with a reference prefixes EAA are those which Page & Wells Limited disclose an interest in accordance with the provisions of the Estates Agents Act 1979



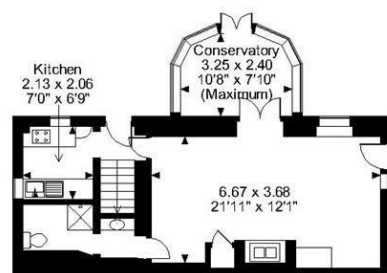
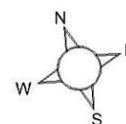
# **Hope House, Church Street Loose, Maidstone**

**Approximate Gross Internal Area**

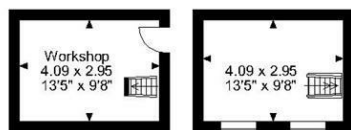
**Main House = 2807 Sq Ft/261 Sq M**

**Workshop = 260 Sq Ft/24 Sq M**

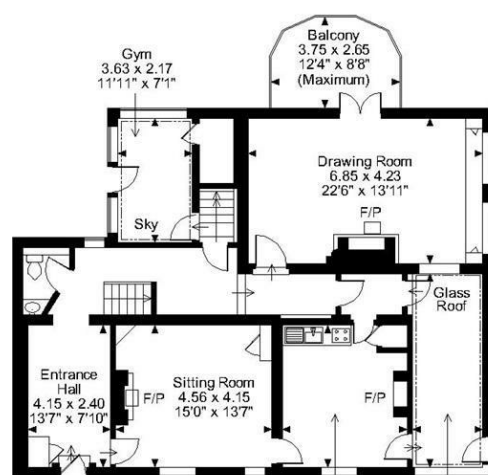
**Balcony external area = 97 Sq Ft/9 Sq M**



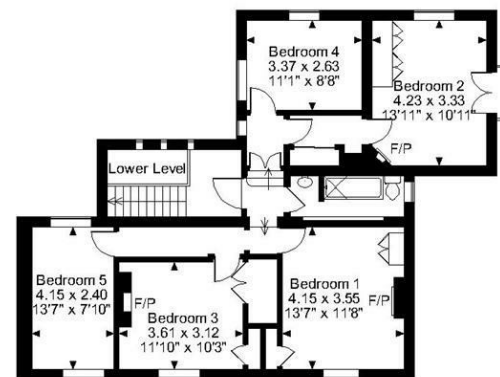
**Basement**



**Floor Above  
Workshop**



**Ground Floor**



**First Floor**

**FOR ILLUSTRATIVE PURPOSES ONLY - NOT TO SCALE**

The position & size of doors, windows, appliances and other features are approximate only.

© ehouse. Unauthorised reproduction prohibited. Drawing ref. dig/8470532/SS

